

Country : Zimbabwe
Province : Manicaland
City : Mutare
Location : Dangamvura

A. WHAT ARE THE ZIMBABWE CHALLENGES:

1. Zimbabwe's land reform and political sanctions have been far-reaching and multifaceted.

Redistribution of land done by Zimbabwe government called The Fast Track Land Reform program implemented in the 2000s. The program led to the redistribution of land from white commercial farmers to black Zimbabweans

It led to economic consequences. The chaotic implementation, lack of planning, and violence associated with the land seizures led to a decline in agricultural productivity, food shortages, and soaring inflation. The once-thriving agricultural sector, a major source of export revenue, collapsed.

The land reforms resulted in widespread suffering, displacement, and human rights abuses. Many new landowners lacked the resources, expertise, or equipment to maintain productivity, further entrenching economic decline.

2. POLITICAL SANCTIONS

Economic Instability: Sanctions imposed by Western countries, citing human rights abuses and erosion of democratic principles, exacerbated Zimbabwe's economic crisis. The sanctions limited access to international funding, led to a decline in official development assistance, and increased the country's risk profile, deterring foreign investment.

3. HUMANITARIAN CONSEQUENCES

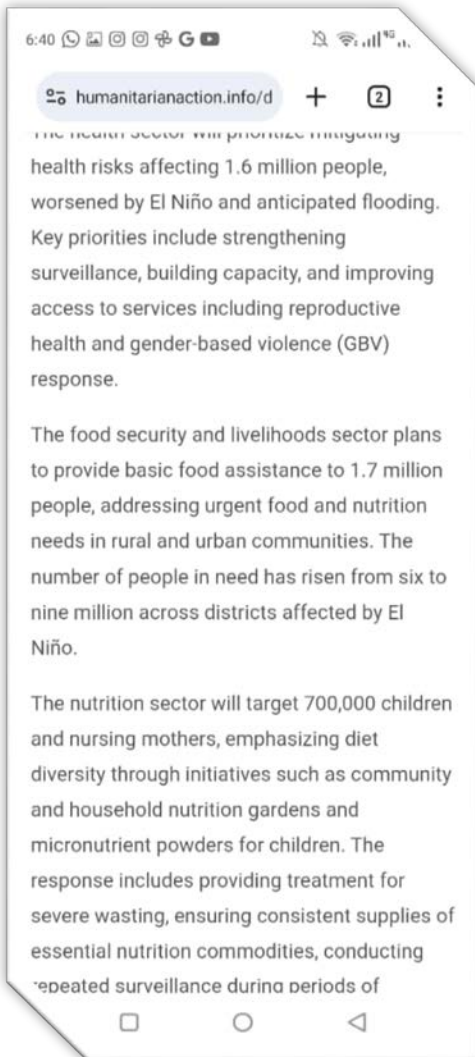
The sanctions had a devastating impact on the humanitarian situation in Zimbabwe, affecting access to healthcare, education, and basic services

Zimbabwe faced widespread condemnation and isolation, further complicating its economic recovery and development efforts.

B. CLIMATE CHANGE, CYCLONES: OUR PROVINCE MANICALAND

Mutare and Chimanimani in Zimbabwe are experiencing significant climate change impacts, including:

1. Extreme Weather Events such as Cyclones, floods, and droughts have devastated the region, with Cyclone Idai in 2019 being a notable example. The cyclone caused massive flooding, destruction of infrastructure, and loss of lives, with 340 people killed and 279 still missing.
2. Climate-related disasters have impacted agricultural productivity, turning farmers into environmental refugees and exacerbating food insecurity.
3. The frequency and severity of climate-related events are driving displacement and migration in Chimanimani, where we have congregations that we also work with.
4. Climate change is linked to increased risk of waterborne diseases like cholera,
5. Survivors of climate-related disasters in our area are experiencing mental health struggles, including trauma and stress.





Our region's vulnerability to climate change is compounded by factors such as our closeness to Mozambique.

B. HOW DID OUR PREACHING MINISTRY COME INTO EXISTENCE?
(Background)

Here's a revised version with corrections:

B. HOW DID OUR PREACHING MINISTRY COME INTO EXISTENCE?
(Background)

Our ministry originated from the institutional Church of Christ. Specifically, it emerged from a Bible College in Mutare city, which was operated by American missionaries and affiliated with the World Bible School based in the USA.

In 1996, our local church's preacher began to challenge certain institutional behaviors and practices within the Bible College. The school had become a central authority over congregations in Zimbabwe, there by congregations, it lost autonomy, which raised concerns.

As a product of that preacher's sound teachings, we rejected institutionalism and its doctrine. Today, we face opposition from surrounding institutional churches of Christ that seem to work tirelessly against the truth.

This is why we seek partnerships with like-minded brethren to support our efforts in spreading the gospel and overcoming the challenges we face. We long to see the true gospel shared in our communities, and your collaboration, despite the distance, would strengthen our ministry.

C. HOW WE CURRENTLY OPERATE AND FUTURE PLANS

Despite facing formidable challenges, we've remained steadfast in our commitment to spreading the gospel, trusting in God's sovereignty to make the impossible possible. We've witnessed remarkable growth, with numerous congregations established and many souls embracing the truth. Collaborating with like-minded preachers who uphold biblical teachings, we aim to saturate our province with the gospel.

Through tireless efforts, we've planted over 80 congregations across Manicaland, with 30 congregations thriving in Mutare, thanks to the dedication of my team of four experienced preachers who usually work with. We're investing in the next generation of leaders by providing extensive training to young and seasoned men we feel has the zeal to preach and teach.

Also, training and developing them.

We sometimes have one-week-per-month training programs aiming to equip men with the skills and knowledge necessary to sustain and grow existing congregations. In the future, it will enable us to expand into unreached areas. We're also nurturing future leaders by mentoring men to become elders and deacons, empowering them to serve with integrity and wisdom.

Our vision is to pioneer new areas where the gospel of Christ has never been preached. With the resources God has entrusted to you and others in his church, we're confident that we can fulfill the Great Commission (**Matthew 28:18-19**) and bring hope to a world in need of the gospel.

CHALLENGES FACED BY PREACHERS

As the Bible teaches, preachers should live by the gospel. (**1 Corinthians 9:14**). The Lord has provided a way, and we ought to follow His teachings. Preaching requires commitment and sacrifice. We don't work for an earthly master; our Master is in Heaven, and He is also our rewarder. Nevertheless, the New Testament commands that those who preach and teach the gospel should be supported and given double honor. (**1 Timothy 5:17**) However, most congregations in Zimbabwe are unable to financially support their gospel preachers due to the circumstances mentioned earlier. As a result, many preachers seek outside financial support. Many, if not all, congregations in Zimbabwe cannot support their preachers. The saints are poor, struggling to have one decent meal a day, send their children to school, or pay hospital bills. Their living conditions are dire, many are employed, and their clothing is often inadequate.

I pray for an opportunity for those blessed to serve the Lord in a greater way. A Zimbabwean preacher can live on \$400-600 per month, depending on their family size, and still effectively do their preaching work. What a blessing it would be for individuals and congregations to support the spread of the gospel by providing monthly assistance. I know some might think and view a want money situation, but sharing information is an eye-opener for those who have greater concern for serving the Lord.

Visiting Zimbabwe would give brethren a firsthand understanding of the importance of their support and the multiple harvests they can reap. As we always know the fact that, stewards of God's resources, we are committed to using His money wisely and are accountable to Him for our actions. Therefore, transparency and accountability are essential in our management of God's finances.



FINAL APPEAL

I cordially invite you to consider visiting Zimbabwe and partnering with us in spreading the gospel. Our country is a safe destination, and you'll find the weather conditions pleasant. This is an excellent opportunity to share your knowledge and experience of the gospel with us.

We understand that some may have concerns about visiting Africa, but we'd like to assure you that Zimbabwe is a safe country with a welcoming environment. We'd be happy to share stories and testimonials from previous visitors to alleviate any concerns.

As I always thought of the preaching ministry and made prayers over it, We encourage you to share your trip and experiences with congregations and individuals. Your stories of God's work in Zimbabwe could inspire others to support your efforts in foreign evangelism. Who knows, your testimony might motivate them to contribute to your sacrifice in spreading the gospel.

*Proposed Collaboration Details*

We've outlined a potential plan for your visit:

1. ***Proposed month:*** April or May 2026
2. ***Duration:*** 2 weeks
3. ***Congregation visits:*** We'll spend 4 days visiting 4 congregations, sharing the gospel, and encouraging our brethren.
4. ***Preacher training:*** 3 days of training classes to equip our preachers with essential skills.
5. ***Leadership training:*** 3 days of classes to prepare men for eldership and deacon roles.

6. ***Preaching camp:*** 2 days of preaching in a new rural area.

7. ***Leisure time:*** 2 days to explore Zimbabwe's beautiful places and resorts.

Feel free to discuss and modify this proposal as you see fit. We're excited about the possibility of working together to advance the kingdom of God.

May God inspire and guide you as you consider partnering with us.

Robert Chinyenze



Yahoo Mail: Search, Organize, Conquer